

each sonority consists of 10000 vibrations

Erik Carlson

notated in Extended Helmholtz-Ellis Pitch Notation

(a few accidentals are incorrect... will fix asap)

A is tuned to 440 Hz

$\text{♩} = 44$

2:1

16:9

7:3

13:17

17:13

3:1

11:9

13:7

11:4

17:8

3:2

7:8

11:4

11:14

17:8

3:2

11:14

16:9

Musical notation for 17:8, featuring a treble clef, a key signature of one flat (B-flat), and a 17:8 time signature. The notation shows a melodic line with a slur over two notes and a bass line with a single note.

Musical notation for 3:2, featuring a treble clef and a 3:2 time signature. The notation shows a melodic line with a slur over three notes and a bass line with a single note.

Musical notation for 2:1, featuring a treble clef and a 2:1 time signature. The notation shows a melodic line with a slur over two notes and a bass line with a single note.

Musical notation for 8:7, featuring a treble clef and an 8:7 time signature. The notation shows a melodic line with a slur over eight notes and a bass line with a single note.

Musical notation for 16:9, featuring a treble clef and a 16:9 time signature. The notation shows a melodic line with a slur over sixteen notes and a bass line with a single note.

Musical notation for 7:3, featuring a treble clef and a 7:3 time signature. The notation shows a melodic line with a slur over seven notes and a bass line with a single note.

Musical notation for 11:9, featuring a treble clef and an 11:9 time signature. The notation shows a melodic line with a slur over eleven notes and a bass line with a single note.

Musical notation for 14:11, featuring a treble clef and a 14:11 time signature. The notation shows a melodic line with a slur over fourteen notes and a bass line with a single note.

Musical notation for 9:11, featuring a treble clef, a key signature of one sharp (F-sharp), and a 9:11 time signature. The notation shows a melodic line with a slur over nine notes and a bass line with a single note.

Musical notation for 9:11, featuring a treble clef, a key signature of one sharp (F-sharp), and a 9:11 time signature. The notation shows a melodic line with a slur over nine notes and a bass line with a single note.

13:11

$\text{♩} = 52$
15:11

15:11

$\text{♩} = 54$
16:11

$\text{♩} = 56$
17:11

17:11

$\text{♩} = 57$
8:11

$\text{♩} = 64$
14:11

14:11

9:11



9:11



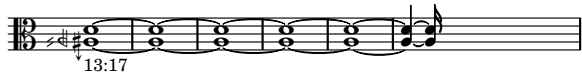
13:11



17:10



4:5



13:17



17:13



5:4



2:1



7:8



8:7

11:4

Musical notation for a 11:4 ratio, showing a sequence of notes with a final sharp sign.

Musical notation for a 11:4 ratio, showing a sequence of notes with a final sharp sign.

3:2

Musical notation for a 3:2 ratio, showing a sequence of notes with a final sharp sign.

11:14

Musical notation for an 11:14 ratio, showing a sequence of notes with a final sharp sign.

$\text{♩} = 72$
16:11

Musical notation for a 16:11 ratio, showing a sequence of notes with a final sharp sign. Tempo marking: $\text{♩} = 72$.

13:11

Musical notation for a 13:11 ratio, showing a sequence of notes with a final sharp sign.

$\text{♩} = 76$
8:11

Musical notation for an 8:11 ratio, showing a sequence of notes with a final sharp sign. Tempo marking: $\text{♩} = 76$.

8:11

Musical notation for an 8:11 ratio, showing a sequence of notes with a final sharp sign.

$\text{♩} = 77$
13:8

Musical notation for a 13:8 ratio, showing a sequence of notes with a final sharp sign. Tempo marking: $\text{♩} = 77$.

3:4

Musical notation for a 3:4 ratio, showing a sequence of notes with a final sharp sign.

5:2

Musical notation for a 5:2 ratio, featuring a treble clef, a key signature of one sharp (F#), and a 5/2 time signature. The melody consists of five quarter notes in the treble staff and two quarter notes in the bass staff, all beamed together.

13:8

Musical notation for a 13:8 ratio, featuring a treble clef, a key signature of one sharp (F#), and a 13/8 time signature. The melody consists of thirteen eighth notes in the treble staff and eight eighth notes in the bass staff, all beamed together.

3:4

Musical notation for a 3:4 ratio, featuring a treble clef, a key signature of one sharp (F#), and a 3/4 time signature. The melody consists of three quarter notes in the treble staff and four quarter notes in the bass staff, all beamed together.

4:3

Musical notation for a 4:3 ratio, featuring a treble clef, a key signature of one sharp (F#), and a 4/3 time signature. The melody consists of four quarter notes in the treble staff and three quarter notes in the bass staff, all beamed together.

5:2

Musical notation for a 5:2 ratio, featuring a treble clef, a key signature of one sharp (F#), and a 5/2 time signature. The melody consists of five quarter notes in the treble staff and two quarter notes in the bass staff, all beamed together.

4:3

Musical notation for a 4:3 ratio, featuring a treble clef, a key signature of one sharp (F#), and a 4/3 time signature. The melody consists of four quarter notes in the treble staff and three quarter notes in the bass staff, all beamed together.

$\text{♩} = 78$
15:11

Musical notation for a 15:11 ratio, featuring a treble clef, a key signature of one sharp (F#), and a 15/11 time signature. A tempo marking of $\text{♩} = 78$ is present. The melody consists of fifteen eighth notes in the treble staff and eleven eighth notes in the bass staff, all beamed together.

$\text{♩} = 81$
16:11

Musical notation for a 16:11 ratio, featuring a treble clef, a key signature of one sharp (F#), and a 16/11 time signature. A tempo marking of $\text{♩} = 81$ is present. The melody consists of sixteen eighth notes in the treble staff and eleven eighth notes in the bass staff, all beamed together.

$\text{♩} = 88$
7:3

Musical notation for a 7:3 ratio, featuring a treble clef, a key signature of one flat (Bb), and a 7/3 time signature. A tempo marking of $\text{♩} = 88$ is present. The melody consists of seven quarter notes in the treble staff and three quarter notes in the bass staff, all beamed together.

11:7

Musical notation for an 11:7 ratio, featuring a treble clef, a key signature of one flat (Bb), and an 11/7 time signature. The melody consists of eleven eighth notes in the treble staff and seven eighth notes in the bass staff, all beamed together.

13:5

3:1

5:7

7:5

11:9

13:7

5:3

7:9

$\text{♩} = 99$
11:16

17:10

4:5

A musical staff in 4:5 time signature. The melody consists of a series of eighth notes, with the first six notes beamed together. The notes are: G4, A4, B4, C5, B4, A4, G4. The staff ends with a double bar line.

5:4

A musical staff in 5:4 time signature. The melody consists of a series of eighth notes, with the first five notes beamed together. The notes are: G4, A4, B4, C5, B4, A4, G4. The staff ends with a double bar line.

7:8

A musical staff in 7:8 time signature. The melody consists of a series of eighth notes, with the first seven notes beamed together. The notes are: G4, A4, B4, C5, B4, A4, G4. The staff ends with a double bar line.

8:7

A musical staff in 8:7 time signature. The melody consists of a series of eighth notes, with the first eight notes beamed together. The notes are: G4, A4, B4, C5, B4, A4, G4. The staff ends with a double bar line.

13:17

A musical staff in 13:17 time signature. The melody consists of a series of eighth notes, with the first thirteen notes beamed together. The notes are: G4, A4, B4, C5, B4, A4, G4. The staff ends with a double bar line.

17:13

A musical staff in 17:13 time signature. The melody consists of a series of eighth notes, with the first seventeen notes beamed together. The notes are: G4, A4, B4, C5, B4, A4, G4. The staff ends with a double bar line.

$\text{♩} = 112$

17:11

A musical staff in 17:11 time signature. The tempo marking is $\text{♩} = 112$. The melody consists of a series of eighth notes, with the first seventeen notes beamed together. The notes are: G4, A4, B4, C5, B4, A4, G4. The staff ends with a double bar line.

$\text{♩} = 121$

7:4

A musical staff in 7:4 time signature. The tempo marking is $\text{♩} = 121$. The melody consists of a series of eighth notes, with the first seven notes beamed together. The notes are: G4, A4, B4, C5, B4, A4, G4. The staff ends with a double bar line.

5:6

A musical staff in 5:6 time signature. The melody consists of a series of eighth notes, with the first five notes beamed together. The notes are: G4, A4, B4, C5, B4, A4, G4. The staff ends with a double bar line.

7:4

A musical staff in 7:4 time signature. The melody consists of a series of eighth notes, with the first seven notes beamed together. The notes are: G4, A4, B4, C5, B4, A4, G4. The staff ends with a double bar line.



5:6

A musical staff in treble clef with a key signature of one flat (B-flat). It contains a sequence of notes with various articulations and slurs, ending with a double bar line. The ratio 5:6 is written below the staff.



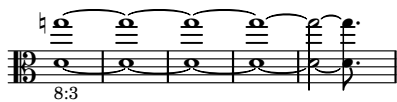
6:5

A musical staff in treble clef with a key signature of one flat. It features a sequence of notes with slurs and articulations, ending with a double bar line. The ratio 6:5 is written below the staff.



7:4

A musical staff in treble clef with a key signature of one flat. It contains a sequence of notes with slurs and articulations, ending with a double bar line. The ratio 7:4 is written below the staff.



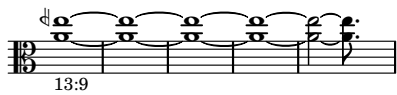
8:3

A musical staff in treble clef with a key signature of one flat. It features a sequence of notes with slurs and articulations, ending with a double bar line. The ratio 8:3 is written below the staff.



5:6

A musical staff in treble clef with a key signature of one flat. It contains a sequence of notes with slurs and articulations, ending with a double bar line. The ratio 5:6 is written below the staff.



13:9

A musical staff in treble clef with a key signature of one flat. It features a sequence of notes with slurs and articulations, ending with a double bar line. The ratio 13:9 is written below the staff.



$\text{♩} = 132$
11:7

A musical staff in treble clef with a key signature of one flat. It contains a sequence of notes with slurs and articulations, ending with a double bar line. A tempo marking of quarter note = 132 is placed above the staff. The ratio 11:7 is written below the staff.



13:5

A musical staff in treble clef with a key signature of one flat. It features a sequence of notes with slurs and articulations, ending with a double bar line. The ratio 13:5 is written below the staff.



5:7

A musical staff in treble clef with a key signature of one flat. It contains a sequence of notes with slurs and articulations, ending with a double bar line. The ratio 5:7 is written below the staff.



7:5

A musical staff in treble clef with a key signature of one flat. It features a sequence of notes with slurs and articulations, ending with a double bar line. The ratio 7:5 is written below the staff.

♩ = 143

9:4

7:6

9:4

6:7

7:6

8:5

9:4

7:6

11:15

♩ = 154

5:2

4:3

9:5

13:15

♩ = 176
3:1

13:7

5:3

11:13

11:13

17:7

7:9

9:7

11:5

17:15

♩ = 187
7:10

9:8

11:6

7:10

8:9

9:8

10:7

11:6

12:5

8:9

$\text{♩} = 198$
11:7

13:5

5:7

7:5